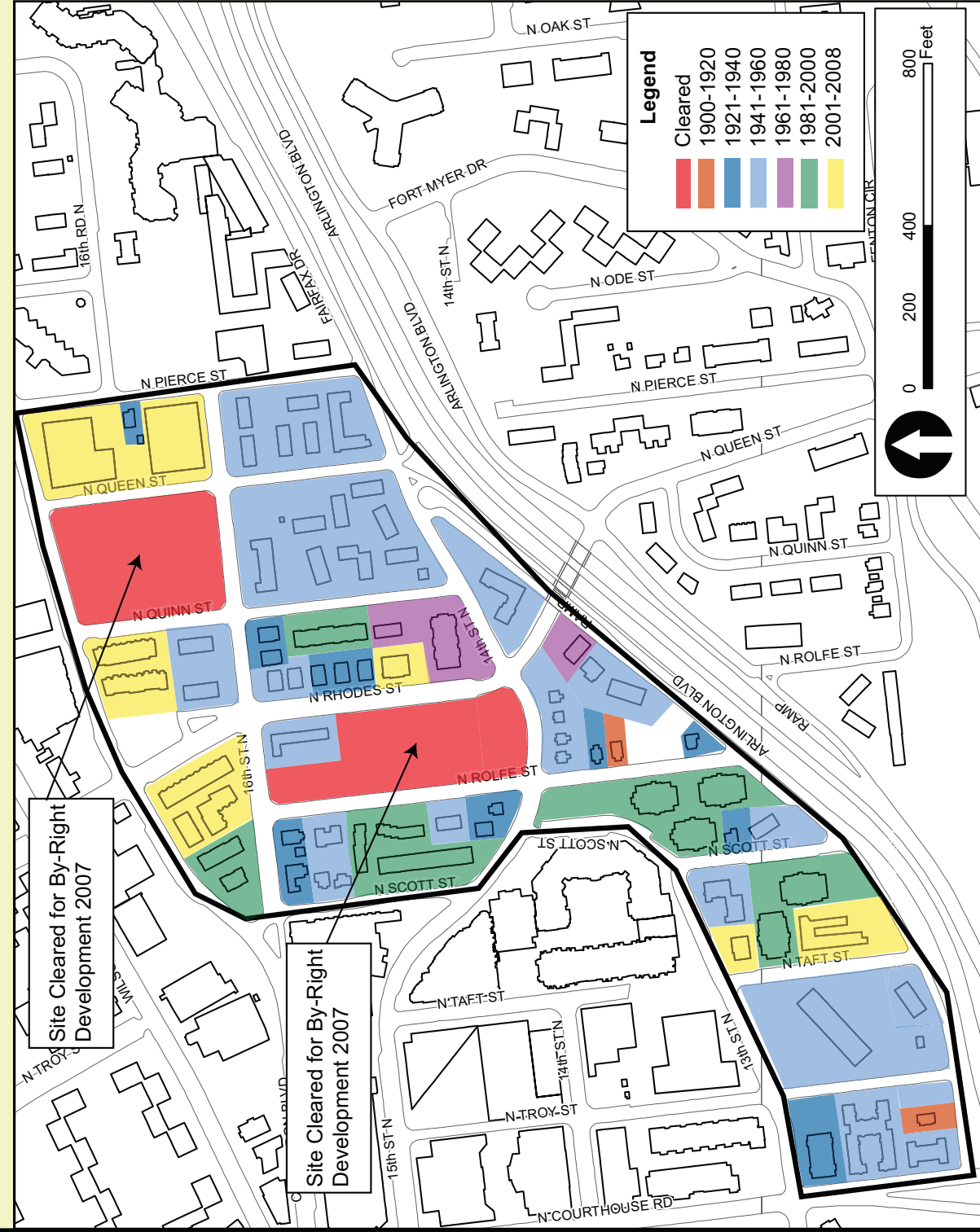
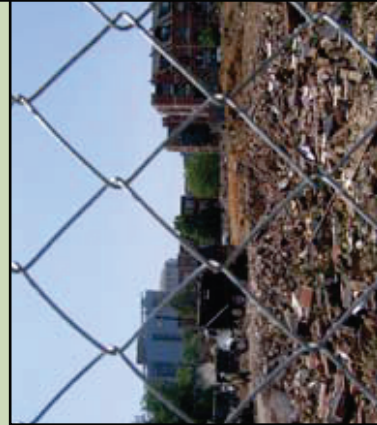


Construction Dates Map



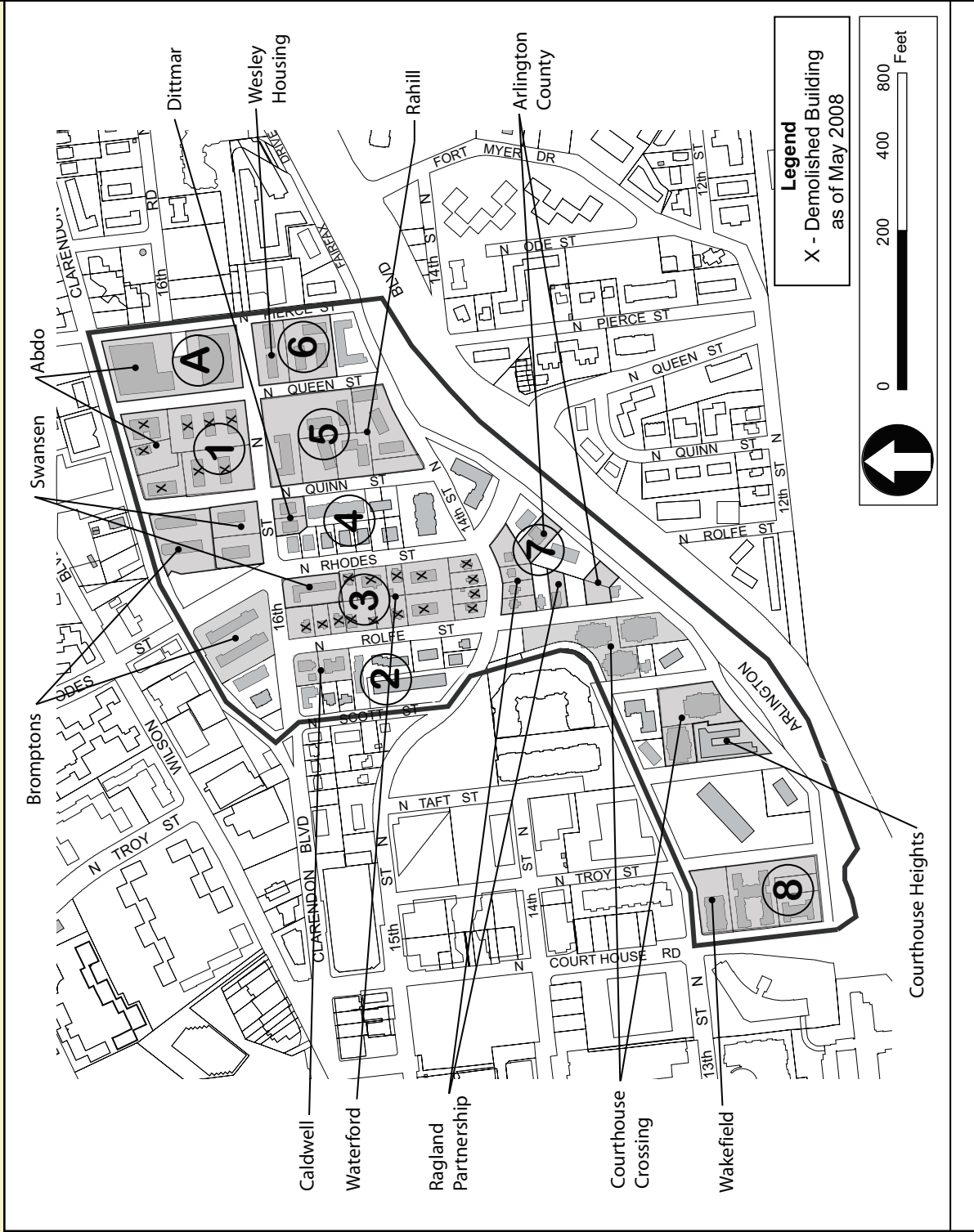
Opportunities for Redevelopment by Site Plan

Due to recent by-right townhouse and condominium development along Clarendon Boulevard, those blocks which present an opportunity for redevelopment through the site plan process are located along Fairfax Drive.



Starting in the 1980s, a number of blocks have been redeveloped by-right with townhouses or condominiums. In 2007 alone, two blocks were developed with by-right luxury condominiums and two others were cleared of their historic buildings and significant trees in preparation for what are likely to be similar projects. Recently redeveloped sites are unlikely to redevelop again in the near term and were not included in this Plan's Illustrative Examples.

Block Locator/Major Property Assemblages Map



Property assemblages in the study area helped to identify which blocks are likely to redevelop - blocks 5, 6, 7 and 8. Should these blocks redevelop through the site plan process they represent an opportunity for achieving one or more identified goals on site.